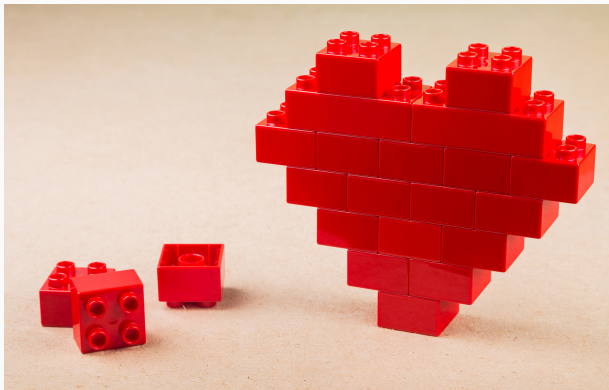


## Hours of Operation

Monday through Friday  
8 a.m. – 4 p.m

**For more information  
or to send a referral,  
please contact:**

**Julie Krupacs, MSW**  
**(804) 257-7226 ext. 7**  
**[jkrupacs@grscan.com](mailto:jkrupacs@grscan.com)**



**Caregivers are responsible  
for transportation to and  
from school. \*Bus tickets will  
be provided as needed.\***

## Meals

The Child and Adult Care Food Program (CACFP) provides nutritious meals and snacks that contribute to the wellness, healthy growth, and development of young children, and the health and wellness of older adults and chronically impaired disabled persons. Participating institutions receive reimbursement by serving these nutritious meals to eligible individuals who are enrolled for care at participating child and adult care centers.

We participate in The Child and Adult Care Food Program (CACFP). Every family must fill out both forms as truthful and to the best of your ability to help us continue to provide nutritious meals and snacks to every family enrolled.

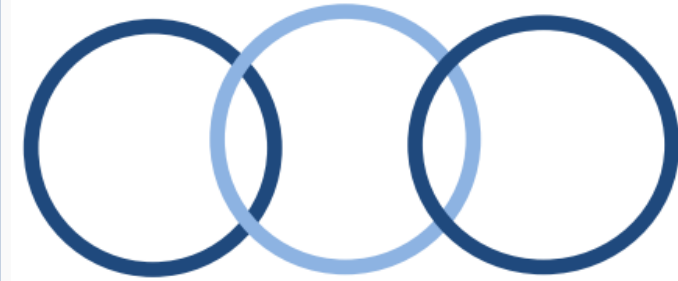


Non-Discrimination Statement in accordance with Federal civil rights law and U.S. Department of Agriculture (USDA) civil rights regulations and policies, the USDA, its Agencies, offices, and employees, and institutions participating in or administering USDA programs are prohibited from discriminating based on race, color, national origin, religion, sex, gender identity (including gender expression), sexual orientation, disability, age, marital status, family/parental status, income derived from a public assistance program, political beliefs, or reprisal or retaliation for prior civil rights activity, in any program or activity conducted or funded by USDA (not all boxes apply to all programs). Remedies and complaint filing deadlines vary by program or incident. Persons with disabilities who require alternative means of communication for program information (e.g., Braille, large print, audiotape, American Sign Language, etc.) should contact the responsible Agency or USDA's TARGET Center at (202) 720-2600 (voice and TTY) or contact USDA through the Federal Relay Service at (800) 877-8339. Additionally, program information may be made available in languages other than English. To file a program discrimination complaint, complete the USDA Program Discrimination Complaint Form, AD-5527, found online at <http://www.fns.usda.gov/procacj> or at any USDA office or write a letter addressed to USDA and provide in the letter all of the information requested in the form. To request a copy of the complaint form, call (866) 652-9992. Submit your completed form or letter to USDA by: (1) mail: U.S. Department of Agriculture, Office of the Assistant Secretary for Civil Rights, 1400 Independence Avenue, SW, Washington, D.C. 20250-9410; (2) fax: (202) 690-7442; or (3) email: [program.intake@usda.gov](mailto:program.intake@usda.gov). USDA is an equal opportunity provider, employer, and lender.

**A Program of  
Greater  
Richmond  
SCAN**



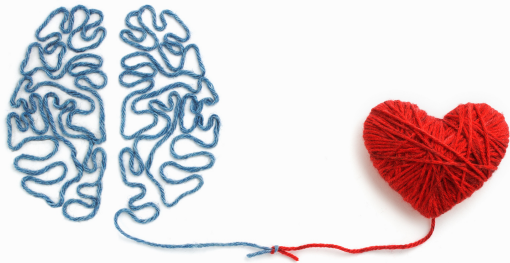
## The Circle Preschool Program



**Located at  
1101 Bainbridge St.  
Richmond, VA  
23224**

## Program Description

The Circle Preschool Program is a Licensed Child Day Center through the Virginia Department of Social Services. We provide services to children and their families in a child centered therapeutic environment. The dual focus of the program provides services to children and their caregivers. The program aims to improve social and emotional functioning, while enhancing foundational learning skills and significantly improving the caregiver and child relationship.



## Our Student Population

Children, ages 3 to 6 who have experienced exposure to various types of adversities or direct trauma. These experiences may impact social and emotional difficulties that interfere with a child's ability to regulate emotions, communicate with others and develop pro-social relationships with peers and adults.

## Services Provided

**Individualized clinical assessments are conducted with each child and family.**

Individual, family and group psychotherapy services are provided through child-centered approaches. We incorporate Theraplay, PCIT, and other evidenced based modalities into our work with families.



**Reggio-inspired, child-directed, therapeutic learning** environment with low child-to-teacher ratio.

**Children are provided opportunities for...**

- Obtaining skills for calming, regulating, and coping with strong emotions
- Supporting development in all domains of early literacy, early math and social skills, through a multi-sensory approach.
- Interacting and learning with children in a typical preschool setting to enhance relationships.
- Occupational therapy available if indicated and Speech consultation services.
- Caregiver programming is provided twice monthly to enhance skills and provide specialized education to our families in a supportive group setting.

## Children enrolled may exhibit the following

- Excessive worries, feelings of anxiety and uncertainty
- Challenges with Attachment, Trust and Separation
- Inability to Regulate or Manage Intense Emotions
- Impulsive, Hyper-vigilant or Aggressive Behaviors
- Poor social and communication skills
- Experiences with nightmares, intrusive memories or is easily startled



**Program Cost:**  
**The fee for the Circle Preschool is \$150 per week. We offer a sliding scale based on caregiver's income.**  
**\*All services are provided regardless of ability to pay\***