

2012-2013 Annual Report



"We owe our children, the most vulnerable citizens in our society, a life free of violence and fear."

- Nelson Mandela





*Protecting children.
Investing in the future.*

Dear Friend,

At SCAN, nothing matters more than keeping children from being hurt. If a child has been hurt, we work to heal them and strengthen their families in the process. By doing so, we strengthen the community at large.

You can read the stories and statistics that demonstrate our progress in fulfilling this mission in our latest Annual Report. Expertise, dedication and partnerships are vital to this work. **As SCAN touches each family, we change their futures and the futures of those around them.**

Children who suffer from abuse and neglect are more likely to have low academic success rates, more likely to need remedial help and more likely have poor relationships with their peers and family. These initial setbacks often lead to substance abuse, incarceration and the need for other social services. As they grow older, children who are abused or neglected are also more likely to suffer from hypertension, diabetes and mental illnesses. **As a result, each year, child abuse and neglect costs society more than \$200,000 per victim to local, state and national governments as well as the nonprofit sector.**

SCAN's programs address the root causes of problems facing families in order to prevent these costly and broad-reaching impacts. SCAN aims to serve families and children with the highest quality education and treatment options. SCAN applies the latest research and best practices when working with families. SCAN uses program models that are proven effective by our national partners. By doing so, **SCAN makes your investments of time and resources go farther.**

In addition, SCAN's dedicated volunteers also play an important role in increasing the impact of our work. Last fiscal year, an average of 100 volunteers per month contributed a total of **7,767 hours** to our program and fundraising efforts. This is an average of 149 hours per week and equals approximately **\$177,864** of "In-Kind Contribution" of volunteer time for the fiscal year.

With your help, SCAN's five programs served more than **2,000** children and their caregivers during Fiscal Year 2013. In addition, SCAN reached more than **60,000** people through its public education and awareness efforts. Each person served by SCAN will carry the positive changes with them for generations to come.

Thank you for investing your energy and hope in SCAN's worthy mission. **As you will read, your support changes lives.**

Sincerely,

Jeanine Harper
Executive Director

Coby Beck
Board of Directors President

Greater Richmond SCAN (Stop Child Abuse Now) is a 501(c)3 non-profit organization founded in 1991 to serve the City of Richmond and the surrounding counties of Chesterfield, Colonial Heights, Goochland, Hanover, Henrico, Louisa, Prince George, and Powhatan. SCAN's mission is to prevent and treat child abuse and neglect throughout the area. SCAN's services promote positive parenting, strengthen families and help create a community that values and cares for its children. We fulfill our mission through the following goals: 1) To deliver and promote programs that prevent and treat child abuse and 2) To increase public awareness of child abuse and neglect.

Family Support Program (FSP)

This program seeks to strengthen families and give parents the tools they need to provide safe, stable and nurturing homes for their children. The program provides intensive, family-focused services for children and parents (including 17 weekly treatment groups) who have been affected by abuse or neglect or are at risk of experiencing child abuse or neglect.

Child Advocacy Center (CAC)

Based on a national model and the first of its kind in Richmond, the CAC is designed to dramatically improve the investigation, treatment and prosecution of severe physical and sexual abuse cases in our community. The CAC provides a safe, child-friendly place for victims and their families to receive child forensic interviews, mental health treatment, medical services, victim advocacy, multidisciplinary case review and case tracking.

Families Are Magic (FAM) Prevention Program

FAM connects parents with other parents, with information on every day child-rearing issues, and with parenting services. Through FAM, SCAN promotes the 1-800-CHILDREN helpline, provides a clearinghouse for parenting resources through www.FAMrichmond.org, offers *Circle of Parents* groups, organizes the annual National Child Abuse Prevention Month campaign, and coordinates a FAM Network of service providers to help improve the community's service delivery to parents.

Richmond Court Appointed Special Advocates (CASA)

The program trains volunteers who advocate for the best interests of children involved in cases of abuse or neglect in the Juvenile and Domestic Relations District Court process. CASA seeks to assure safe and permanent homes for all children.

Circle Preschool Program (CPP)

The therapeutic preschool program offers early childhood education and mental health treatment to preschool-aged children who have experienced trauma related to abuse, neglect or exposure to domestic violence. The innovative program is the first of its kind in the area. Based on best practices and models around the country, SCAN improves social and emotional functioning for children with the goal of enhancing school readiness. By incorporating caregivers, SCAN also significantly improves family functioning.

Who does SCAN serve?

During the July 2012 – June 2013 fiscal year, the Family Support Program served **403** parents and **195** children—all from families that have experienced or were at high risk of experiencing child abuse and/or neglect. The CAC served **535** children who were victims of severe physical and/or sexual abuse and **44** of their non-offender parents. The CASA program served **217** children. The Circle Preschool Program helped 18 children and **28** caregivers.

Unlike other SCAN programs, which target high-risk families, FAM services are for ALL parents because child-rearing presents universal challenges for everyone. SCAN reached an estimated **60,000** people last year through public education and awareness efforts. Specifically, FAM served **1,256** adults through parenting workshops and child abuse and neglect trainings.

2012-2013 Program Updates

Family Support Program (FSP)

The FSP served an increasingly high-risk population last fiscal year. Many of the program's clients had histories of sexual abuse, physical abuse and emotional abuse. Caregivers were also often unemployed, had histories of domestic violence, were receiving other mental health services and were receiving substance abuse treatment services.



The program served 403 parents and 195 children through a total of 15 weekly treatment and education groups. To serve people who were impacted by a number of hardships, the FSP worked to improve its treatment and education group curriculums to better integrate trauma-informed practices. The FSP also developed programs to serve specific populations including a group at the Rubicon Women and Children's Treatment Center and a group for teen mothers involved in the Richmond Juvenile and Domestic Relations District Court.

Though the challenges facing these families were difficult to navigate, the program proves that it creates positive and lasting change. Caregivers indicated on exit surveys that they became better parents, learned to nurture their children more, learned new ways of discipline and developed a better understanding of how they were raised and how that impacted the way they raised their own children.

The Child Advocacy Center (CAC)

In 2012-2013, the CAC served 535 children and 44 of their non-offending caregivers. Throughout the year, the CAC maintained a waitlist for mental health services. Also, more localities used the CAC for child forensic interviewing, demonstrating a continued and increased need to help children affected by physical and sexual abuse.



The CAC worked with SCAN's many partners to ensure that all children and their families received the services they needed through intensive case management. The CAC also formalized a new Multidisciplinary Team with Henrico County, and therefore engaged new law enforcement officials, medical professionals, local government, social services and more to meet the growing needs of our community.

The CAC also remained dedicated to providing the highest quality services to improve the investigation, treatment and prosecution of each case that came through the CAC. The CAC made training staff members and Multidisciplinary Team partners a priority by ensuring that they had access to relevant and high quality training. In recognition of its continued high quality of service and adherence to best practices, the CAC was approved for its second accreditation by the National Children's Alliance in January 2013.

2012-2013 Program Updates

Families Are Magic (FAM) Prevention Program

FAM continued to lead SCAN's community-wide efforts to prevent child abuse and neglect. Last fiscal year, the program reached more than 60,000 people through awareness and education.

FAM trained 1,046 people about topics including mandated reporting, parenting and child sexual abuse prevention. SCAN continued to be the main provider in Virginia of the revolutionary Stewards of Children child sexual abuse training. SCAN has trained 1,203 people total, including 335 people last fiscal year.



In collaboration with SCAN's mental health program at the CAC, FAM helped create, launch and promote a new training entitled "Trauma 101," aimed at enhancing knowledge and understanding of trauma and the impact it has on children. This training was an integral component of SCAN's goal to create a more trauma-informed child welfare system in the Greater Richmond area.

FAM also reached people in person at public events, providing parenting information, family activities and handing out FAM cards to lead people back to the FAMRichmond.org website. The website is a clearinghouse of information and resources for parents and professionals who work with children.

Richmond Court Appointed Special Advocate (CASA) Program

Richmond CASA staff members and volunteers served 217 children last fiscal year. They represented 100% of all abused and neglected children who came before the Richmond Juvenile and Domestic Relations District Court. Richmond CASA collaborated with many partners in local government and other organizations to advocate for safe, permanent homes for these children. These partnerships help CASA achieve the best outcomes for children.

Of the children CASA served, 100% were placed in the least restrictive environment for their needs and 98% did not experience abuse while in the care of CASA volunteers. The diligent research, reporting and advocating of Richmond CASA was recognized by judges, who continued to rely on Richmond CASA recommendations to make important decisions regarding the futures of children and their families.

Richmond CASA also worked to provide additional training and education to volunteers by working with Metro CASA, which includes Henrico and Chesterfield CASA programs. Metro CASA conducted a training about educational advocacy. The training was also presented at the State CASA Conference and to the Newport News CASA program. Metro CASA also held a training that featured a case study that required trainees to review, develop strategies and manage the case.

2012-2013 Program Updates

Circle Preschool Program (CPP)

During the final year of its pilot phase, the preschool continued to have a waitlist for its services. The innovative program model was effective in positively changing the lives and families it serves, which included 18 children and 28 adults during the 2012-13 fiscal year. While the staff worked to help children and families each day, they also invested in improving methods for treatment and evaluation and expanded its network of partners.



For example, the Clinical Services Coordinator completed extensive training through the Child Trauma Academy and received specific training on the Neurosequential Model of Therapeutics web-based clinical assessment tool. This has become and will be vital in informing education activities and therapeutic interventions for each child.

The staff collaborated with national organizations to create a listserv for professionals providing therapeutic preschool services across the nation. The listserv allowed therapeutic preschool programs across the country to share information, best practices, research and more to help the children they serve.

In addition, CPP staff members along with other SCAN staff helped create the Trauma Informed Community Network (TICN), which is comprised of professionals in the Greater Richmond area who are committed to practicing and advocating for trauma-informed care. Members included representatives from the Mental Health Resource Center, Virginia Department of Social Services, ChildSavers, the VCU School of Social Work and more. The primary goal of the group was to educate key people about trauma and to help create systemic change.

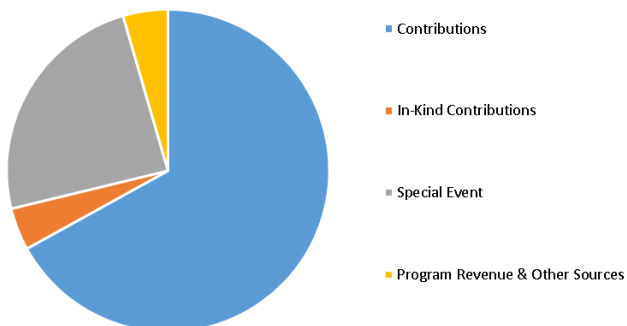
“We need to figure out how to increase the number and quality of relationships in all children, from high risk to no risk. The first community and culture that acts on this gift to create consistent, nurturing, safe environments for young families and their children is going to see a huge quantum leap in all kinds of things...”

—Bruce Perry, M.D., Ph.D., ChildTrauma Academy

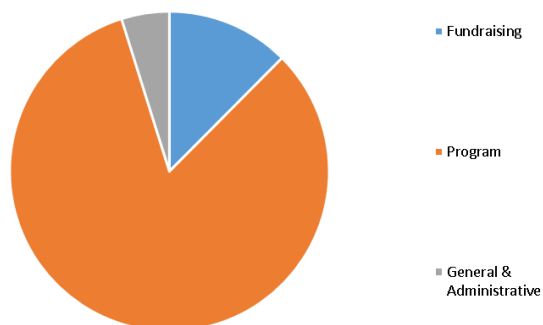
2012-2013 Financial Position

A full audit is available upon request.

Revenue



Expenses



Revenue:

Contributions	\$693,264
In Kind Contributions	\$44,013
Special Events	\$251,385
Program Revenue & Other Sources	\$46,632

Expenses:

Fundraising	\$168,559
Program	\$1,118,141
General & Administration	\$65,650

STAFF

Jeanine Harper, Executive Director

Bethany Leighton, Development Coordinator

Megan Wilson, Development Associate

Margie Gehler, Operations Coordinator

Jana Blue, Volunteer Coordinator

Anne Buzzelli, Program Assistant

FAM (Families Are Magic)

Lucy Block, FAM Coordinator

Lynne Edwards, FAM Prevention Community Consultant

Child Advocacy Center

Ian Danielsen, CAC Coordinator

Lisa Wright, Mental Health Program Coordinator

Briana Valentino, Case Manager

Jan Williamson, Mental Health Therapist

Angela Josie-Lederer, Mental Health Therapist

Circle Preschool Program

Kathy Ryan, Clinical Coordinator

Denise Powers, Early Childhood Education Specialist

Caronda Bond, Teacher's Aide
Richmond CASA (Court Appointed Special Advocates)

Peg Ruggiero, CASA Program Coordinator

Blair Bedinger, Case Manager

Jessica Moore, Case Manager

Family Support Program

Angela Borsella, Family Support Program Coordinator

Lucy Block, Group Facilitator

Gwen Bohn, Group Facilitator

KC Cloud Borgstedt, Group

Facilitator

Rhonda Graboske, Group

Facilitator

Nicole Heindl, Group Facilitator

Jennifer Jenkins-Boitnott, Group Facilitator

Virginia Lamneck, Group Facilitator

Dee Lucome, Group Facilitator

Claudia Perez, Group Facilitator

Erica Perry, Group Facilitator

Toni Rippee, Group Facilitator

Rebecca Sherrard, Group Facilitator

Lesly Shepardson, Group Facilitator

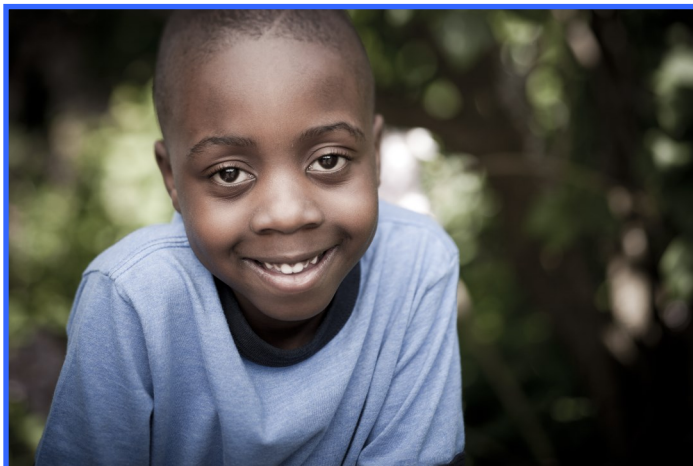
Stacey Williams, Group Facilitator

Emily Yeatts, Group Facilitator

Vision for 2013-2014

Goals for 2013-14 Fiscal Year

1. SCAN will continue to help develop and implement trauma-informed practices and integrate protective factors throughout organizations serving children and families in the Greater Richmond area. By using the Families Are Magic (FAM) Prevention Program and the Trauma-Informed Community Network (TICN), SCAN will share information and trainings to enhance the prevention of child maltreatment and improve treatment outcomes in our community.



2. SCAN will explore the establishment of a Child Advocacy Center (CAC) satellite facility in localities outside of the City of Richmond to improve access to forensic interviews, case management and treatment options for children who have been severely physically or sexually abused.

3. SCAN will continue to explore the feasibility of the expansion of the Circle Preschool Program throughout the Greater Richmond area to bring early childhood education and mental health treatment to children in need. The preschool will expand collaboration opportunities with VCU Department of Occupational Therapy, the School for Social Work, and School of Education.

4. Through the Richmond Court Appointed Special Advocates (CASA) Program, SCAN will continue to collaborate at the system level to advocate for best practices and policies for children. Richmond CASA will also work to enhance awareness and volunteer recruitment for the program by implementing the “I am for the Child Campaign” in collaboration with the Henrico and Chesterfield CASA Programs.

5. Through the Family Support Program (FSP), SCAN will continue to create partnerships to offer treatment and education groups to caregivers in specific, high-risk populations. For example, SCAN has begun a new group for young mothers involved in the Juvenile and Domestic Relations District Court system, which is a result of meetings and collaborations with judges and court services staff.

**“There are two lasting
bequests we can give our
children. One is roots.
The other is wings.”**

- Hodding Carter, Jr.

Protector's Circle

(Donors \$1,000 and above)

Trina and Roy Anise
Kelly and Tiff Armstrong
Lindley and Coby Beck
Cathy and Howard Bos
Kathryn and Matt Brotherton
Carter and John Bryan
Wendy and Wadsworth Bugg
Daisy and Tom Byrd
James Cabaniss
Edie and Bob Cabaniss
Jennifer and David Campbell
Jeff Chandler
Andrea and Robert Clark
Kevin Collier
Rose and Josh Dare
Susan and Robert Dausch
Trudy Rickman and Chuck Dean
Carrie and Bob DeLille
Paul Edmunds
Anne Marie and Scott Elles
Samira Fazel
Audrey and David Franks
Dena Frith and Chris Moore
Dana and Gray Garland
Bruce Gottwald, Jr.
Mary Anne Graf
Martha and John Grover
Betsy and Frank Harris
Cindy and George Harrison
Hillary and Brett Hawkins
Marsha and Michael Hawkins
Diane and Gene Hosenfeld
Dianna and Billy Hupp
Renee and Stephen Hupp
Kari and Heath Hyman
Gail and Reginald Johnson
Kimberly Cosby and William Johnson, Jr.
Carrie and Tommy Johnstone
Cindy and Michael Joyce
Margaret and Jerry Keightley
Jen and John Kostyniuk

Debra R. Krey
Amy and Byron Ladd
Benjamin Ladd
Juliet and Mark Levin
Teshau Luan
Kat and Mike Liebschwager
Elizabeth and Michael Martin
Cathy and Read McGehee
Jasper Mersereau
Caroline and Marshall Morton
Lynn and Jeff Mussatt
Allie and Richard Oelhafen
Jay Olander
Linda and Larry Paige
Shelton Panak
Ann Marie and Bryan Petrucelli
Scottie and George Phillips
Kelly Pickerel
Kevin Purnell
Thomas Rankin
Leslie and Winston Read
Maria and Kevin Reardon
Kathleen and Bob Redmond
Cynthia Schmitz
Janet and Lee Showalter
Michael Sieja
Martha and Bobby Speight
Jeanne and Charlie Stallings
Lucinda and John Stanchina
Mary and Wallace Stettinius
Laura and Patrick Strickler
Eric Sundberg
Letty and Bill Tate
Christie and Birck Turnbull
Gayla and John Turner
Margaretha and Jose Valderas
Janet and Mark Walker
Elizabeth Scott Warren
Stephanie and Brad Welles
Laura and Steve Wilson

2012-2013 Board of Directors

Coburn Beck, President
Troutman Sanders LLP

Birck Turnbull, Vice President
Thalhimer

Bryan Petrucelli, Treasurer
Kinsale Insurance Company

George Phillips, III, Secretary
Thomas Rutherford, Inc.

Cathy Bos
Community Volunteer

Leemore Burke
Commonwealth OB/GYN

Jeff Elgin
Capital One

Dana Garland
Community Volunteer

Kristin Hamlin
Wells Fargo

Janis Hannukesla
JLH Enterprise, LTD

Brett Hawkins
Thompson, Siegel & Walmsley LLC

Kari Teagno Hyman
Boscobel LLC/ Free Bridge Contracting LLC

Gail Johnson
Rainbow Station, Inc.

Margaret Keightley
Catholic Diocese of Richmond

Jen Kostyniuk
Dominion, Inc.

Benjamin E. Ladd
McGuire Woods, LLP

Lisa Leiner
Harman, Claytor, Corrigan & Wellman, PC

Nancy Oglesby
Henrico Commonwealth's Attorney's Office

Jay Olander
Apartment Trust of America

Carolyn Port
The Pediatric Center

Kevin Purnell
Kevin D. Purnell PLLC

Marni Rice
Community Volunteer

Michael Sieja
Altria Client Services Inc.

Martha Speight
Community Volunteer

Jeanne Stallings
Community Volunteer

John Turner
Bon Secours Richmond Health System

Bradford W. Welles
Deloitte

Steve Wilson
Morgan Keegan

2012-2013 Donors

\$50,000

The Cameron Foundation
Jenkins Foundation
Moses D. Nunnally, Jr. Charitable Trust
Richmond Memorial Health Foundation
Robins Foundation
West Second Charitable Lead Annuity Trust

Mr. Bruce Cobb Gottwald, Jr.
Mr. and Mrs. John G. Grover
Mr. and Mrs. Brett Hawkins
Mr. Jay Olander
Thomas Rutherford*
Troutman Sanders
Mr. and Mrs. Birck B. Turnbull*
Wells Fargo

\$20,000

Bon Secours Richmond Health System
Mr. and Mrs. Howard Bos
The Florence S. & Robert W. Cabaniss Foundation
Mr. and Mrs. Robert W. Cabaniss, Jr.
Carmax
Children's Advocacy Centers of Virginia
Dominion Resources
Dr. & Mrs. Jerry Keightley
The Lipman Foundation
Memorial Foundation for Children
Nationwide Foundation
Richmond Capital Management
George and Effie Seay Trust
Mr. and Mrs. William S. Tate

Mr. and Mrs. Tiff Armstrong
Mr. & Mrs. Coburn Beck
Drs. Alan & Leemore Burke
Mr. James B. Cabaniss
Mr. Jeff Chandler*
Kimberly D. Cosby and William Johnson, Jr. *
Mr. and Mrs. Carl Creel
Crestwood Presbyterian Church
CSC Leasing Company
Mr. and Mrs. Josh Dare*
Drs. Robert & Susan Dausch
Mr. David Deghetto
Mr. Sam Dibert
Dominion Digital
EAT Restaurant Group
Mr. and Mrs. Paul Edmunds, II
Mr. and Mrs. Jeff Elgin
Ernst & Young
Fidelity Investments
First Presbyterian Church
Franko LaFratta
Handcraft Services, Inc.
Heartbeat of Hope
Mr. and Mrs. Eugene Hosenfeld
Hunton & Williams LLP
Mr. and Mrs. Steve Hupp
Mr. and Mrs. Heath Hyman

\$5,000

AECW Fund of the Community Foundation
Mr. and Mrs. Bradford W. Welles*
Apartment Pros
Mr. and Mrs. Thomas Byrd
Deloitte
Mr. James T. Gottwald

2012-2013 Donors

Mr. and Mrs. Michael Joyce
 Dr. and Mrs. Byron Ladd
 Mr. Benjamin E Ladd
 Markel Corp
 Mr. and Mrs. Michael Martin
 Dr. & Mrs. Read McGehee
 McGuire Woods
 Mr. Jasper Mersereau*
 NewMarket Corporation
 Mr. and Mrs. Bruce Oglesby
 Owens & Minor
 Mr. and Mrs. Bryan Petrucelli
 Mr. and Mrs. George Phillips
 Ms. Kelly Pickerel*
 Plan G
 Preschool of Midlothian Village
 Mr. and Mrs. Baylor Rice
 Mr. Richard Schultz
 Showalter Family Fund of The Community
 Foundation
 Soloman & Ludwin
 Mr. and Mrs. Bobby Speight
 St. Edward the Confessor Catholic Church
 Mr. and Mrs. John Stanchina*
 Mr. and Mrs. Wallace Stettinius
 Mr. and Mrs. John Turner
 Udig
 Mr. and Mrs. Jose G Valderas, Jr. Esq.*
 Virginia Eye Institute
 VSC Fire and Security
 Mr. and Mrs. Mark Walker *
 Mr. and Mrs. Steve Wilson

\$1,000

Mr. and Mrs. Franco Ambrogio
 Mr. and Mrs. Roy Anise
 Ms. Toni Ardabell
 Ms. Casey Bartok

Mr. and Mrs. Tom Bean
 Mr. Daniel Bickett
 Mr. Matthew Brotherton
 Mr. and Mrs. Orran Brown
 Central Virginia Dart Association
 ColonialWebb Corporate Citizenship Program
 Mr. and Mrs. Matthew Conrad
 Mr. and Mrs. Lawrence Eiben
 Estes Express Lines
 Mr. & Honorable Judge Franks
 Mr. and Mrs. Frank Harris
 Mrs. Gail Johnson
 Mr. and Mrs. John Kostyniuk
 Mr. and Mrs. Douglas Krey
 Mr. and Mrs. Paul Lundmark
 Mr. and Mrs. Harris Leiner
 Mrs. Sally Maruca
 Mr. and Mrs. Chris Moore
 Mr. and Mrs. Marshall Morton
 Nordstrom
 Mr. and Mrs. Ron Page, Jr.
 Mr. and Mrs. Kurt Parpart
 Drs. John & Carolyn Port
 Protiviti
 Mr. Kevin Purnell
 Mr. & Mrs. Kevin Reardon
 Reveille Weekday School
 Rural Point Elementary School
 Mr. Will Saunders
 Mr. and Mrs. Alexander H. Slaughter
 Mr. and Mrs. Richard Sneider*
 St. James's Episcopal Church
 Mr. and Mrs. Charlie Stallings
 Mr. and Mrs. Perry Taylor
 The Why Not Shop
 Mr. and Mrs. Fred Wunderlich

*** Donors who contributed through United Way**

2012-2013 Donors

\$500

Ms. Mary Cooper Adams Aerotek Reverend and Mrs. Charles Aiken Ms. Viki L. Armentrout Mrs. Aurie Barnes BB&T Mr. and Mrs. C Armistead Blanton, IV Buford Family Fund Central Virginia NARI Chesterfield Technical Center Club Mom-Chesterfield Town Center Cowan, Gates, P.C. Mr. Brian Curtis DadePaper Mr. Daniel Deans Diamond Springs Mr. and Mrs. Jeffrey B. Dickerson Ms. Chesley Edmund Mr. and Mrs. Heath Gates Genworth Financial Ms. Katherine Godin Mr. and Mrs. Jeff Hamlin Ms. Kristin Hamlin Mr. and Mrs. Michael Hawkins Int. Fdn. For Psychosocial Wellness JoycePayne Partners Mr. and Mrs. David Kennedy Mr. James Kresge Mr. & Mrs. Stephen Lambert Mr. and Mrs. William Loving Macerich Mr. Phillip Marstiller, Jr. Mr. & Mrs. Edwin Meyer Mr. Paul Meyer*	Mr. and Mrs. David Mize Mr. and Mrs. Edwin F. Myer Mr. & Mrs. Hugh Newton* Ms. Margery Pabst Partnership for Nonprofit Excellence Rare Old Times Ms. Kristen Read Mr. and Mrs. Patton Roark Rotary Club of South Richmond Ms. Cynthia S. Schmitz Mr. & Mrs. William H. Schultz Kathryn and W. Harry Schwarzschild Fund Senior Connections Mr. & Mrs. Whit Shane* Sidney H. Kirstein Law Office South River Compounding Pharmacy, Inc. Drs. Shaun and Suzanne Spadafora Mrs. Syral Specter SunTrust Mortgage Sycamore Insurance Mr. Christopher R. Tetzlaff Truliant Federal Credit Union Mr. and Mrs. James Ukrop Valentine Family Fund Ms. Janis Warren Mr. and Mrs. Mark Wheless Mr. and Mrs. B. Briscoe White, III Ms. Susan Wilson
----------------------------------------------------------------------------------------------------------------------------------------------------------------------------------------------------------------------------------------------------------------------------------------------------------------------------------------------------------------------------------------------------------------------------------------------------------------------------------------------------------------------------------------------------------------------------------------------------------------------------------------------------------------------------------------------------------------------------------------------------------------------------------------------------------------------------------------------------------------------------------	-------------------------------------------------------------------------------------------------------------------------------------------------------------------------------------------------------------------------------------------------------------------------------------------------------------------------------------------------------------------------------------------------------------------------------------------------------------------------------------------------------------------------------------------------------------------------------------------------------------------------------------------------------------------------------------------------------------------------------------------------------------------------------------------------------------------------

\$250

Mr. and Mrs. Kermit Ayres
Mr. and Mrs. Bikram Bal
Mr. Nathan Bass

* Donors who contributed through United Way

2012-2013 Donors

Ms. Jennifer Pons Bellamy
Mr. and Mrs. Fred Bisger
Mr. and Mrs. Tom Oliver Brooks
Capital Interior Contractors
Mr. Travis Chewning
City of Richmond Volunteer Coordinator
Mr. Jonathan Dare*
Mr. Mark Dillon*
Mr. Robert Donovan*
Elizabeth Downey
Ms. Lyndsay Downey
Mr. and Mrs. E.C. Eck
Mr. Douglas Edwards
Ms. Susan Ellett
Ms. Elizabeth Enders
Mr. and Mrs. Stephen Enright
Ms. Karen Gansky
Mr. and Mrs. Eric Gehler
Golden Girls
Mr. & Mrs. James Hamilton
Harman, Claytor, Corrigan & Wellman
Mrs. Robinette Hatch*
Ms. Mary Henderson
Ms. Mary Holland*
Ms. Iris Holliday
Ms. Jacquelyn Johnson
Ms. Paulette Johnson*
Mr. & Mrs. Connor Jones
Mr. James Jones
Joyner Fine Properties
Ms. Karen Kaminski
Mr. and Mrs. William Karn
Mr. James Kessel
Ms. Kara Kirstein
Mr. Adam Klausner
Mr. and Mrs. James Leavitt, III
Mr. and Mrs. Lonnie A. Lemco
Ms. Paige Lyon
Main Street Homes
Mr. and Mrs. W. Reilly Marchant

Mr. and Mrs. Brian Marron
Ms. Anne Martin
Ms. Patricia A. McCullough
Mr. and Mrs. Jeffrey C. Meck
Ms. Whitney Mercer
Mr. & Mrs. Evan Miller
Mr. and Mrs. John Moncrief
Mr. and Mrs. Jeff Mussatt
Ms. Theresa Nichols
Mr. Elliot Norman
Ms. Shelton Panak
Mr. and Mrs. Peter Quinn
Mr. Mark E. Ramos
Ms. Adrienne Rich
Richmond Window
Mr. and Mrs. Agustin Rodriguez
Ms. Barbara Sipe*
Ms. Emily Smith
Mr. Daniel Stembridge
Mr. Neil Talegaonkar
Mr. and Mrs. Joe J. Tannery*
Mr. and Mrs. William Tyler
Ms. Catherine J. Vick
Virginia Economic Development Partnership
Ms. Susan Wadsworth
Mr. Dennis Walsh
Mr. & Dr. Andrew Wenk and Courtney Legum-
Wenk
Mr. Preston Wigner
Ms. Betty Williams*
Mr. & Mrs. David Wray
Mr. and Mrs. Davis Wrinkle

\$100

Agecroft Hall Association
Ms. Annette G. Alabaster
Mr. Pete Augusterfer
Mr. & Mrs. Ron Barden
Barnes and Noble

2012-2013 Donors

Mr. & Mrs. Chason Beggerow
Mr. and Mrs. Christopher Blair*
Ms. Carolyn A. H. Bourdow
Mr. & Mrs. Michael Bowen
Ms. Martha Bowman*
Mr. and Mrs. Jeff Boyer
Mr. and Mrs. Mark Bradby
Ms. Katherine Bradshaw
Mr. and Mrs. John Branch, Jr.
Mr. Albert Brodell*
Mr. and Mrs. Harold Brooks
Mr. and Mrs. Thomas R Brown
Mr. and Mrs. Duncan Buoyer
Ms. Barbara W. Campbell
Ms. Melanie Campbell
CATO Corporation
Ms. Alison Chapman
Ms. Amy Ciarametaro
City Church of Richmond
Ms. Marie Coley
Mr. and Mrs. Greg Combs
Mr. and Mrs. Richard Coppola
Mr. and Mrs. Larry Corbett
Sharon and Edwin Cox
Ms. Catherine Crepps
Mr. Joseph Crews
Mr. and Mrs. John Crews
Mr. Joe J. Croce
Mr. & Mrs. Roy Dahlquist
Ms. Sheri Dickerson
Honorable Judge Phillip Distanislao
Mr. and Mrs. Frank Driggs
Dunlora Womans Club
Mr. and Mrs. Mr Harold Lanna Earle
Ms. Jennifer Eason
Mr. and Mrs. Dan Ensminger
P.A & W. W. Franklin
Ms. Sarah Frydrych
Mr. and Mrs. Pete Gallagher
Mr. & Mrs. Robert Geen
Ms. Courtney Gilbert

Mr. Michael Gill*
Mr. Paul Given
Mr. and Mrs. Charles L. Gold
Good Search
Ms. Carmesha Goodwyn
Mr. and Mrs. Kevin Gordon
Cheryl Miller & Steve Grossman
Mr. and Mrs. John Gwathmey
Ms. Melissa Hannan
Mr.& Mrs. William Hannum
Mr. and Mrs. Marion Hargrove
Ms. Kathy Headlee
Ms. Renee Hicks
Ms. Gloria Hintz
Mr. & Mrs. John Hodges
Mr. and Mrs. Byron and Mary Brantley Holmes
Mr. and Mrs. Thomas M. Horton
Ms. Bethany Hover
Mr. and Mrs. Stephen Huebner
Mr. & Mrs. Michael Hurd
Ms. Kathryn Johnson
Ms. Danielle Jones
Mr. F. Jeffrey Keil
Mr. and Mrs. John Kelleher
Mr. and Mrs. Mark Kettlewell
Ms. Alena King
Mr. Michael Koch
Mr. and Mrs. Barry Koval
Mr. and Mrs. Russell Krey
Drs. David and Sharon Lanning
Ms. Eleanor Lawyer
Ms. Mara Leach*
Ms. Shelley Leder
Mr. and Mrs. Lee Seham
Dr. and Mrs. Jeffrey Levin
Dr. & Mrs. Steven Linas
Ms. Laura Lively
M&E Contractors
Mr. & Mrs. Alexander Macaulay
Ms. Kimberly Macleod

* Donors who contributed through United Way

2012-2013 Donors

Mr. & Mrs. Joel Maddux
Ms. Anna Marsh
Mr. and Mrs. Michael J. Maruca
Mr. and Mrs. Robert McClintock
Mr. and Mrs. David McGee
Ms. Nan McKenney
Mr. and Mrs. Jonathan McNamara
Mr. Scott McRae
Mr. and Mrs. David Meyers
James Moulds & Aileen Rivera
Ms. Jessica Bennett
Mr. and Mrs. Edward Kelley Nickel
Mr. and Mrs. Joseph Nunn
Mr. and Mrs. Stephen Peeples
Ms. Mary Phythian
Mr. & Mrs. Raymond Powers
D. H. Price
Ms. Mandi Quicke*
Mr. and Mrs. Brian Quigley
Mr. and Mrs. Gavin Raphael
Mr. and Mrs. Brewster Rawls
Mr. and Mrs. Taylor Reese
Mr. and Mrs. Ervin Reid
Carla Roca and Steve Shaffer
Mr. Jonathan Rogers
Mr. and Mrs. Dan Rosenthal
Mr. Shawn Ryan
Mr. and Mrs. Craig Sampson
Ms. Kim Schmidt
Ms. Shirley Shaheen
Ms. Patty Shell
Ms. Meredith Shields
Mr. Mark Shoemaker
Ms. Kimberley Skowysz*
Ms. Casey Slawinski
SMS Architects
Mr. and Mrs. James Smylie
Ms. Laura Snarr
Ms. Blair Sowers
Mrs. Sally Sperberg
Mr. and Mrs. Charles Spitzer

Sarah Starkey and Warren Groseclose
Mr. & Mrs. James Starnes
Dr. & Mrs. Kenneth Steingold
Mr. and Mrs. Brude Stoevers
Ms. Sharon Stone
Ms. Danielle Stoneman
Mr. and Mrs. Al Strickler
Ms. Amy Strite
Ms. Susanne Sturges
Ms. Maria Swanson*
Ms. Jane P. Taft
Ms. Nichole Taitague
Ms. Charlotte Tate*
Ms. Teri A Taylor
Mr. and Mrs. Peter Tetlow
Mr. Richard Thorton
Tom Leonard's Farmers Market
University of Richmond Spiders
Mr. and Mrs. Paul Van De Putte
Mr. and Mrs. Ernest C. Vaughan, Jr.
Alan and Marciano Villamiel Rudnick
Mr. and Mrs. Gordon Wallace, Jr.
Mr. and Mrs. Jerry Wauford
Mr. Stephen P. Webb
Chris Weber
Mr. and Mrs. Joseph Weigl
Mr. and Mrs. Clayton Wigg
Mr. and Mrs. Harold J. Williams, III
Ms. Jeanette Winder-Tipling
Ms. Lindsey Wise
Ms. Jessica Wittkamp
Ms. Beth Woods
Mr. Randy Wyckoff
Ms. Christy Yeardon

THANK YOU!

2012-2013 In-Kind Donors

Altria
Mrs. Aurie Barnes
Booker Family
Drs. Alan & Leemore Burke
Mr. and Mrs. Charlie Stallings
Cosby High School
Mr. and Mrs. Trey Eggleston
Mr. and Mrs. Eugene Hosenfeld
Mr. and Mrs. Heath Hyman
James Center Property LLC
Ms. Susan Jones
Mr. David Kopsick
Mr. and Mrs. John Kostyniuk
Mr. & Mrs. Frank Mazzeo
Northwestern Mutual Financial Network
Omni Hotel
Penn State Alumni Richmond Chapter
Mr. Kevin Purnell, Esq.
Richmond Police Department
Sharper Palate
Starbucks
Troutman Sanders
Tru Divas Social Club
VCU Enrollment Services
Virginia Department of Health
Mr. and Mrs. Steve Wilson
Robin Youman

